

7003 CURB PLATE

Used in sidewalk above a gutter inlet
Embed into concrete during construction

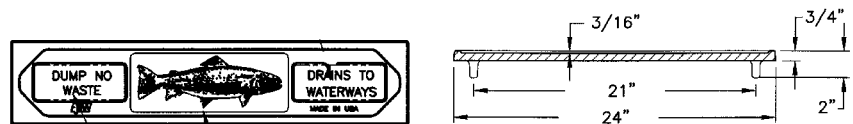
7001 — 5" width

7003 — 3" width

Options

Special lettering

"DUMP NO WASTE!" lettering
and fish image



7010 CATCH BASIN CURB INLET

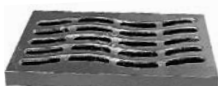
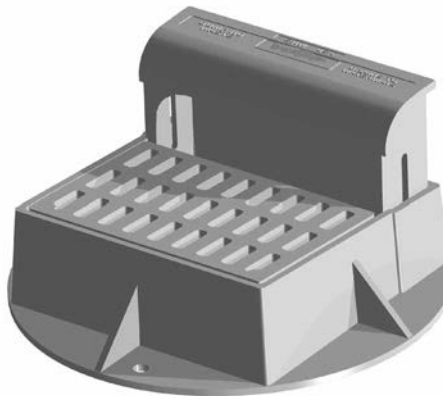
Heavy duty

With Type M1 grate and T1 back

Approximate 130 sq. in. open area

Curb back ht. adjusts from 3 1/2" to 8"

"DUMP NO WASTE!" lettering and fish image on back



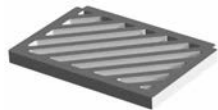
Type M3 Sinusoidal Grate

Approx. 140 sq. in.
open area



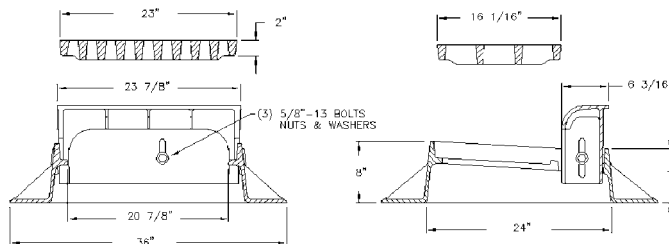
Type M4 Vane Grate

Approx. 125 sq. in.
open area



Type M5 Diagonal Bar Grate

Approx. 160 sq. in.
open area



Type T2 Back

Height Adjusts 2" to 3 1/2"



Type T4 Curb Plate With Trout Image

Supplied By:

TRENCHDRAIN
SUPPLY

877-903-7246

www.trenchdrainsupply.com